

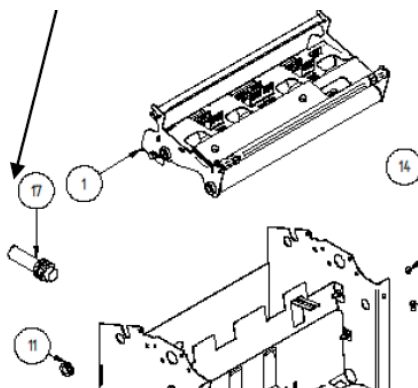
PANNOMATIC ANOMALIES REGARDING THE BACKSIDE PHOTOCELL

PERMANENT RED LIGHT	
CAUSES	SOLUTIONS
MISTAKE IN LOADING OF PAPER	MAKING THE RIGHT LOADING OF PAPER
AFTER THE SUPPLY, PAPER IS NOT TAKEN AWAY	TAKE PAPER AWAY

RED LIGHT FLASHES AFTER SUPPLY	
CAUSES	SOLUTIONS
BACKSIDE PHOTOCELL DOESN'T READ PAPER	REGULATE THE POTENTIOMETER OF THE PHOTOCELL BY INCREASING RAY STEP BY STEP
BROKEN PHOTOCELL	REPLACE THE PHOTOCELL AND REGULATE THE POTENTIOMETER



PHOTOCELL



INSTRUCTIONS FOR THE PROGRAMMING AND ADJUSTMENT OF A.C. MODELS



FT 18



- **TRIMMER FOR THE SENSING RANGE ADJUSTMENT:** The photocell is supplied with max. sensing range with the trimmer totally rotated in the clockwise direction. The sensitivity reduces by rotating the trimmer in the anti-clockwise direction.
- **SWITCH NO/NC:** The photocell is supplied with switch in NO position (in absence of the object to be detected the output is deactivated). To change to N.C. (in absence of the object to be sensed the output is activated) turn the switch to N.C. in the anti-clockwise direction.
- **LED FOR INDICATION OF OPERATION:** This indicates the output of the photocell, in the absence of the object to be sensed it is off with output N.O. and is on with output N.C. this changes state when the object to be sensed enters into the sensing area of the photocell.

NOTE! Before giving a power supply to the photocell it is recommended that the same unit be programmed by using the switch in the required function NO or NC.

NOTE! It is recommended that the trimmer and the switch be rotated very carefully by using a proper tool otherwise these can be seriously damaged.

RED LIGHT FLASHING	
CAUSES	SOLUTIONS
PAPER IS NOT LOADED CORRECTLY	PLEASE LOAD IT CORRECTLY
THE PAPER IS NOT WELL SUPPLIED	PLEASE CHECK THE RUBBER DRIVE WHEELS
DRAGGING WHEELS PRESENT A VERY SMOOTH PELLICON AND THEY CANNOT DRAG THE PAPER (THE CAUSE CAN BE TOO MANY, GLOSS DASHBOARDS OR FABRICS, WHICH WELL THE WHEELS AND CRYSTALLIZE, MAKING THE WHEEL SURFACE TOO SMOOTH)	CLEAN THE WHEELS WITH SOLVENT OR REMOVE THE FILM WITH AN ABRASIVE (GLAZED PAPER) PAY ATTENTION NOT TO RUIN THE WHEELS. REGULATE THE QUANTITY OF THE LIQUID PRODUCT
DRAGGING WHEELS WITH STICK	CLEAN THE WHEELS WITH THE SOLVENT REPLACE THE WHEEL GROUP
THE DRIVE WHEELS MUST NOT TURN BY HAND ON THE CRANKSHAFT	REPLACE THE WHEEL GROUP
CHECK THAT THE TWO ROLLERS OF FIG. 1 INDICATED BY THE ARROW ARROWS WITHOUT STRIKING	

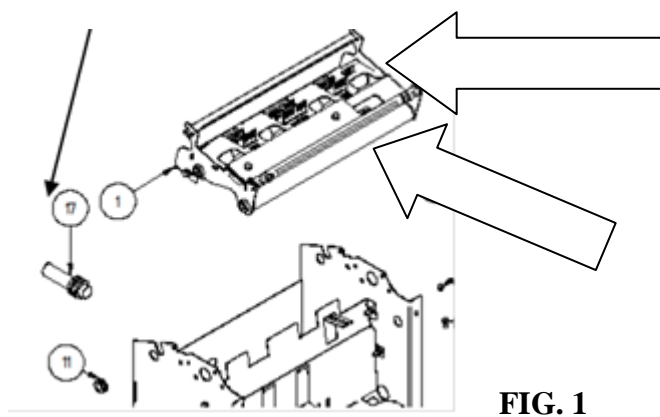


FIG. 1

WARNING

IF THE RED LIGHT FLASHES TO RE-ENABLE THE OPERATION, SWITCH THE MACHINE OFF AND ON AGAIN