

HOW TO CHECK IF THE PHOTODIODES OF THE PANNOMATIC 2018 WORK WELL

1. If you have credit to pick a towel the green led light is steady.
2. With photodiodes obscured by the towel, the green led light will blink.
When the photodiodes are free by picking the towel, the green led light will turn off if you don't have credit anymore.
If you have credit, you'll see it steady.
3. If between them you don't have the towel but the green led light is blinking, you have to check the photodiodes because they don't see each other.

WARNING

DURING THE CHECK PHASE OF THE PHOTODIODES, THERE MUST BE CREDIT (green led light steady).

PROPER FUNCTIONING

PLEASE GO TO THE PAGE IN FIG. 2 WITH ▲○▼

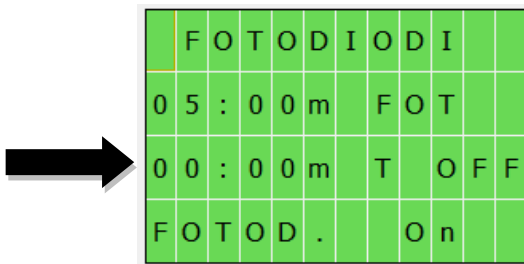


FIG. 2

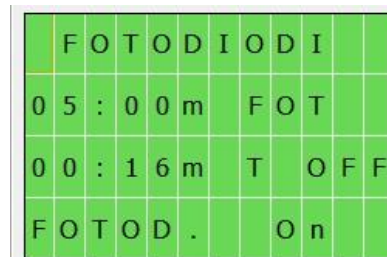


FIG. 3

WITH PHOTODIODES WHICH DON'T SEE EACHOTHER (green led light blinking with towel to pick) THE TIMER IN FIG. 2 WITH MUST BE AT 00:00

WITH PHOTODIODES WHICH SEE EACHOTHER (green led light steady, without towels) THE TIMER I. FIG. 2 – 3 WITH MUST INCREASE TILL REACH AT 05:00 MINUTES

AFTER THE 5 MINUTES, THE POWER IS TURNED OFF ON THE PHOTODIODES (FIG.4) EVERYTIME THAT THE PHOTODIODES ARE OBSCURED, THE TIME START AGAIN.

PLEASE CHECK:

1. WHILE THE GREEN LED LIGHT IS BLINKING, PLEASE CHECK THE BOARD SUPPLY (FIG.4)

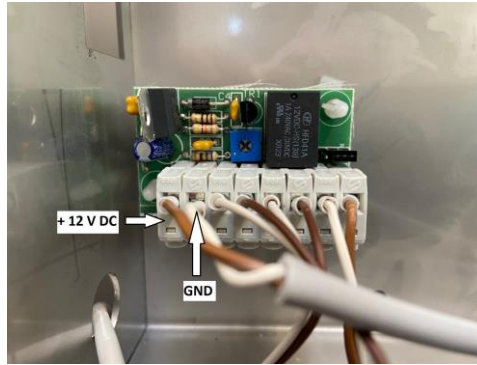


FIG.4

2. PLEASE DISASSEMBLE THE PHOTODIODE IN FRONT AND BACK AND LINK THEM (FIG. 5-6-7).



FIG. 5



FIG. 6



FIG. 7

- IF THE GREEN LED LIGHT IS STILL BLINKING YOU HAVE TO CHANGE THE PHOTODIODES OR THE BOARD.
- IF THE GREEN LED LIGHT TURNS OFF PLEASE CLEAN THE PHOTODIODES AND THE HOLE OF BRACKET (FIG. 8-9) OF THE PHOTODIODE TRANSMITTER (THE WHITE ONE)



FIG. 8



FIG. 9

3. PLEASE MOUNT AGAIN THE PHOTODIODES

4. IF WHEN YOU MOUNT AGAIN THEM THE GREEN LED LIGHT TURNS BLINKING, PLEASE ACT ON THE TRIMMER OF THE BOARD TILL THE GREEN LED LIGHT TURNS OFF. (FIG. 10)

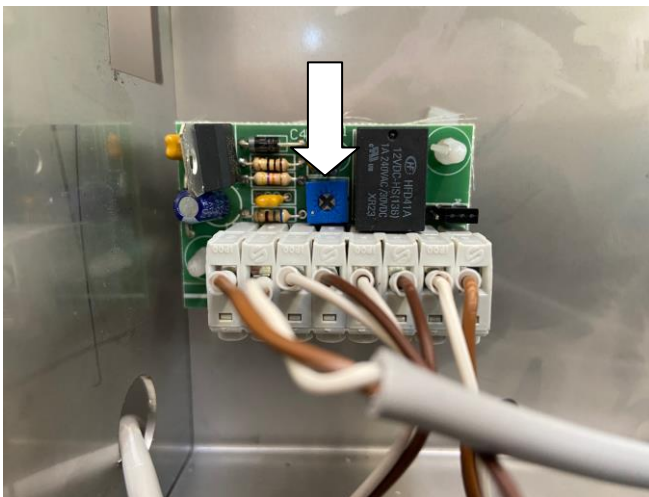


FIG. 10

IF IT NEVER TURNS OFF, FIRST OF ALL CHANGE THE PHOTODIODES AND IF YOU HAVE THE SAME PROBLEM WITH THE NEW ONES, PLEASE CHANGE THE BOARD.